

Product guide

# Reliable power, vibrant colour



HP Color LaserJet Enterprise MFP M680 series



March 2014

# Table of contents

<b>3</b>	Stay reliably productive with a high-performance colour MFP
<b>4</b>	Product walk around
<b>5</b>	Product comparison
<b>6</b>	Top features at a glance
<b>7</b>	Make workflow fly
<b>11</b>	Invest in reliable performance
<b>14</b>	Mobilise business printing
<b>15</b>	Ready, set, grow
<b>19</b>	Conserve resources without sacrificing performance
<b>20</b>	Technical specifications
<b>24</b>	Ordering information

# Stay reliably productive with a high-performance colour MFP

Enhance every day efficiency and productivity with the powerful HP Color LaserJet Enterprise MFP M680 series. Print, scan, copy, and fax<sup>1</sup> on a high-performance MFP with tools to complete large jobs at the device or on the go.<sup>2</sup>

## Who can benefit?

Workgroups of up to 30 people can share this high-performance, high-volume colour MFP to print and copy—plus scan and fax.<sup>1</sup> Power up your productivity with this MFP's user-friendly colour touchscreen, input capacity of up to 3,100 sheets,<sup>3</sup> and easy mobile printing options. Choose the Flow M680z model for additional workflow features like an integrated keyboard for smooth data entry and advanced scanning and routing options.<sup>4</sup> Easily upgrade this enterprise device as your organisation's needs change—and use simple, central management tools to save IT time and budget.



# Product walk around

HP Color LaserJet Enterprise Flow MFP M680z shown

- 1 Intuitive 20.3 cm (8-inch) colour touchscreen control panel
- 2 100-sheet automatic document feeder (ADF) with single-pass, two-sided scanning and HP EveryPage with ultrasonic double-feed detection
- 3 Home button (returns to home screen)
- 4 900-sheet, 3-bin stapling mailbox accessory
- 5 500-sheet output bin
- 6 Hardware integration pocket (for connecting accessory and third-party devices)
- 7 Easy access USB port to save and print files directly
- 8 Front door (access to toner cartridges)
- 9 Built-in automatic duplexer
- 10 Lower-left door (access for clearing jams)
- 11 500-sheet tray 2
- 12 2 x 500-sheet paper feeders
- 13 1,500-sheet paper feeder with stand
- 14 Pull-out keyboard for easy, accurate data entry
- 15 Right-side door (access for clearing jams)
- 16 100-sheet multipurpose tray
- 17 On/off button
- 18 Fax port
- 19 HP High-Performance Secure Hard Disk
- 20 800 MHz processor, 2 GB RAM
- 21 Foreign interface harness (for connecting external devices)
- 22 Hi-Speed USB 2.0 printing port
- 23 Hi-speed USB 2.0 port (for connecting third-party devices)
- 24 HP Jetdirect Gigabit Ethernet print server
- 25 Access port for optional Kensington-style lock



## Series at a glance



Model	MFP M680dn	MFP M680f	Flow MFP M680z
<b>Part number</b>	CZ248A	CZ249A	CZ250A
<b>100-sheet multipurpose tray</b>	✓	✓	✓
<b>500-sheet tray 2</b>	✓	✓	✓
<b>500-sheet tray 3 with storage cabinet</b>	Optional	✓	Not available
<b>2 x 500-sheet and 1,500-sheet paper feeders with stand</b>	Optional	Optional	✓
<b>900-sheet, 3-bin stapling mailbox</b>	Optional	Optional	✓
<b>Touch-to-print and wireless direct mobile printing</b>	Optional	Optional	Optional
<b>100-page ADF with single-pass, two-sided scanning</b>	✓	✓	✓ (Plus HP EveryPage)
<b>Pull-out keyboard</b>	Not available	Not available	✓
<b>Fax</b>	Optional	✓	✓

# Product comparison

The following table compares the new HP Color LaserJet Enterprise MFP M680 series with the HP Color LaserJet Enterprise CM4540 MFP series.



HP Color LaserJet Enterprise Flow MFP M680z	HP Color LaserJet Enterprise CM4540fsm	Benefits
42 pages per minute (ppm) print speed, <sup>5</sup>	40 ppm print speed	Faster output
2 GB standard memory and pre-installed 320 GB encrypted HP High-Performance Secure Hard Disk	1280 MB memory and 120 GB encrypted Hard Disk Drive	Better performance and improved print job retention and security
3,100-sheet maximum input capacity (standard on Flow M680z model) <sup>3</sup>	2,100-sheet maximum input capacity (standard on CM4540fsm model)	Higher input capacity minimises interruptions
Powered by HP FutureSmart device firmware	Not available	Superior investment protection with streamlined firmware updates
20.3 cm (8-inch) articulating colour touchscreen control panel	HP Easy Select rectangular colour control panel	Improved ease of use, displaying six functions at one time (rather than four functions)
Enhanced digital workflow capabilities (Flow M680z model only): <ul style="list-style-type: none"> <li>• 100-sheet extended-life ADF with HP EveryPage double-feed detection</li> <li>• Black-and-white scan speeds: up to 62 ppm simplex; up to 86 ipm duplex</li> <li>• Pull-out keyboard</li> <li>• Auto-tone, auto-orientation, auto-page-crop</li> <li>• Switchable scan background (black or white)</li> <li>• Embedded OCR</li> <li>• Embedded send-to-Microsoft® SharePoint®</li> </ul>	Standard workflow features: <ul style="list-style-type: none"> <li>• 50-sheet ADF</li> <li>• Black-and-white scan speeds: up to 42 ipm simplex/duplex</li> <li>• Other features not available</li> </ul>	Increased workflow productivity, accuracy, and flexibility
11,500/21,000-page (regular/high-capacity) black cartridge yield 16,500-page colour cartridge yield <sup>6</sup>	8,500/17,000-page (regular/high-capacity) black cartridge yield 12,500-page colour cartridge yield	Print longer with less intervention
HP Auto-On/Auto-Off Technology <sup>7</sup>	Not available	Easy way to save energy
Optional wireless direct and touch-to-print capabilities <sup>8,9</sup>	Not available	Improved efficiency and mobile printing options

# Top features at a glance

This high-performance, reliable colour MFP gives your entire organisation access to the tools they need to boost productivity.



Two-sided scanning

## Make workflow fly

- Finish faster—without missing a page—using single-pass, dual-head scanning. HP EveryPage detects potential errors and missed pages on the spot.<sup>4</sup>
- Enter data more quickly and accurately, using the Flow M680z model's pull-out keyboard.<sup>4</sup>
- Scan and send digital files directly to email, SharePoint,<sup>4</sup> network folders, or the cloud.<sup>10</sup>
- Manage jobs directly at the MFP, using the 20.3 cm (8-inch) colour touchscreen.
- Walk up and print or scan right from a memory device via the easy-access USB port.



Up to 3,100 sheets maximum input capacity

## Invest in reliable performance

- Meet the demands of high-volume print jobs. This MFP has a paper capacity up to 3,100 sheets—plus a three-bin stapling mailbox.<sup>3</sup>
- Get exceptional value from Original HP high-capacity ink cartridges.
- Experience colour printing that's vibrant, consistent, and affordable. Produce attractive, professional quality reports and brochures every time.



Mobile printing

## Mobilise business printing

- Eliminate the wires and complications from printing. Give users simple, direct access to the MFP by adding optional wireless direct printing.<sup>8</sup>
- Enable more convenient and secure mobile printing. With the optional near-field communications (NFC) module, employees can send documents by simply touching their smartphone, tablet, or notebook to the MFP.<sup>9</sup>
- Print virtually anywhere from your mobile device with built-in print capability or the HP ePrint app and software.<sup>11</sup> Print from an iPad®, iPhone®, or iPod touch® with Apple® AirPrint™.<sup>12</sup> Works with Mopria-certified devices.<sup>2</sup>



Remote printer management

## Ready, set, grow

- Help protect your investment with an MFP that can grow with your business. Easily upgrade and seamlessly integrate firmware and features, on your schedule.
- Manage your entire printing environment from a single location—with HP Web Jetadmin.<sup>13</sup>
- Safeguard sensitive data with a full suite of advanced security solutions and an encrypted HP High-Performance Secure Hard Disk. Add additional security with the HP Imaging and Printing Security Center.<sup>14</sup>



Auto-On/Auto-Off Technology

## Conserve resources without sacrificing performance

- Help save energy with HP Auto-On/Auto-Off Technology.<sup>7</sup>
- This high-performing, energy-efficient HP Color LaserJet printer is Blue Angel compliant and ENERGY STAR certified.
- Get up to 50% paper savings with built-in automatic two-sided printing.
- Print on a variety of paper types—even office papers as light as 60 g/m<sup>2</sup>.

# Make workflow fly

Power up your productivity with super-fast two-sided scanning and a 20.3 cm (8-inch) colour touchscreen with image preview—to help provide the best results, ahead of time. The Flow MFP M680z helps speed tasks with even more workflow features.<sup>4</sup>

## Double down on speed



Two-sided scanning

Get more done with the HP Color LaserJet Enterprise MFP M680 series. The 100-sheet ADF allows you to scan two-sided documents in a single pass for quick job processing, without flipping pages by hand. Blank-page suppression technology automatically detects and removes blank pages from scanned documents, reducing file size.

The Flow MFP M680z model's ADF includes HP EveryPage, which uses ultrasonic technology to help detect double-feeds and avoid missed pages in scanned files—even if the size and weight of the paper varies. The Flow model's extended life ADF boasts a robust recommended monthly scan volume of 26,750 to 44,500 pages. It also offers fast scan speeds. With two-sided black-and-white scanning speeds of 86 images per minute (ipm), and colour speeds of 63 ipm, large duplex scanning projects are done in a flash.



Pull-out keyboard

### Fast, accurate input

Make scanned documents easier to organise and find by adding information to files and context to your email with the large pull-out keyboard, available on the Flow MFP M680z model.<sup>4</sup> Typing addresses, file names, and index data with two hands is not only fast for the user, but also improves the accuracy of the data.

## Pristine scans

To help ensure accurate scans, the ADF can automatically deskew sheets that are not inserted quite straight and determine the best output format and exposure for the data content. Automatic colour detection, which is user-selectable, classifies an input original as either colour or non-colour. And with edge erase, you can eliminate paper punch holes, staples, and black overscan lines by specifying a distance from each of the four paper edges to be pushed to white.

The Flow M680z model provides additional advanced automatic-imaging features, including auto-orientation, which adjusts each page of an individual job to be correct-side up, eliminating the need to ensure that each single-sided page in a job is placed face-up and top-up in the ADF. Auto-page-crop automatically sets the scan to the paper edges, and auto-tone sets contrast, brightness, and background removal for each page.

### Expand scanning possibilities

The 216 by 356 mm (8.5 by 14 in) flatbed scanner lets you easily copy and scan non-standard and bound material. And colour scanning comes standard on all HP MFPs, allowing you to preserve the appeal of full-colour documents and photos. Scan in 24-bit colour—ideal for sharing and archiving high-quality digital versions of your originals. With full-colour scanning, scanned files are easier to read. Your black-and-white copies will look better as well, because any coloured areas will show up as greyscale shading. With monochrome scanners, these shaded areas tend to just disappear.

## Put the right touch on tasks

Enjoy the convenience of an easy-to-use 20.3 cm (8-inch) colour LCD touchscreen control panel for a trouble-free user experience.

The control panel offers:

- Adjustable tilt angle of the touchscreen to provide convenient accessibility to all users.



Colour touchscreen



Easy-access USB

**Pull print jobs from your pocket**

Walk up and print or scan right from a memory device. The easy-access USB near the control panel lets you quickly complete your print job from a flash drive. A variety of file types are supported. Scan to PDF, JPEG, TIFF, MTIFF, XPS, and PDF/A files. Print from PDF, PostScript (PS), and print ready files (.prn, .pcl, .cht).



Scan to the cloud

- Image preview, which lets you add, delete, reorder, and zoom in on pages for digital send jobs at the control panel. For more information on image preview, see “Efficiency at your fingertips” on page 8.
- Simple-to-use menus that allow you to set system defaults, customise settings for a particular job, and configure and launch HP Quick Sets. For more details about HP Quick Sets, see page 9.
- Illuminated Home button on the side of the control panel that quickly returns the touchscreen to the Home menu.
- Helpful feedback while interacting with the touchscreen graphical display. The MFP has a built-in Help system that explains how to use each screen. To open the Help system, touch the Help button in the upper-right corner of the screen. For some screens, the Help button opens to a global menu where you can search for specific topics. For screens that contain settings for individual jobs, the Help button opens to a topic that explains the options for that screen.
- Clear instructions and illustrations, including animations for tasks such as jam recovery.
- Easy-to-read status messages in one location.
- Localised virtual keyboards for inputting text, such as email addresses, filenames, and metadata.
- Large pull-out keyboard on the HP Color LaserJet Enterprise Flow MFP M680z model for easier data entry.

**Efficiency at your fingertips**

The control panel on this MFP features image preview, which lets you minimise steps and reduce errors. Right from the device’s 20.3 cm (8-inch), full-colour touchscreen control panel, you can view and edit your scan job before you send it to a network folder, fax,<sup>1</sup> email, FTP, USB device, or the cloud.<sup>10</sup> With the Flow M680z model, you can also send scans to Microsoft SharePoint.<sup>10</sup> With image preview, not only can you save files on your network from the device, you can easily get your scans to look just the way you want them. Instantly preview and modify scans before sending them into the workflow, eliminating the need to walk back and forth from a computer.

Scan multiple pages using the ADF and view them as thumbnail images, or zoom and pan for a detailed inspection. Before finalising a document you can reorder, rotate, delete, add, or zoom in on pages. You can apply changes to a single page, or multiple pages at once.





## Break through the paper barrier

Easily integrate paper documents into the digital workflow—send scanned documents directly to their destination with no need for middleware. Built-in LDAP addressing simplifies email distribution, while optional HP Digital Sending Software enables advanced document capture and routing.<sup>15</sup>



Scan to email

### Easy digital sending setup

Set-up wizards help you quickly and easily configure your HP MFP's digital sending features.

- The Send-to-Email Default Setup Wizard helps you link your MFP to your email server, then set up default email and scan settings. The Send-to-Email Quick Set Wizard makes it easy to manage often-used Send-to-Email favourites, as well as set up default scan settings. Scanning to email can be a great time-saver when communicating with customers, vendors, or coworkers.
- The Save-to-Folder Quick Set Wizard helps you create destination folders on your computer using Quick Sets. It walks you through configuring the default scan settings that will be applied when scanning to each folder. Now you can start digitally filing your documents for easy storage and retrieval.

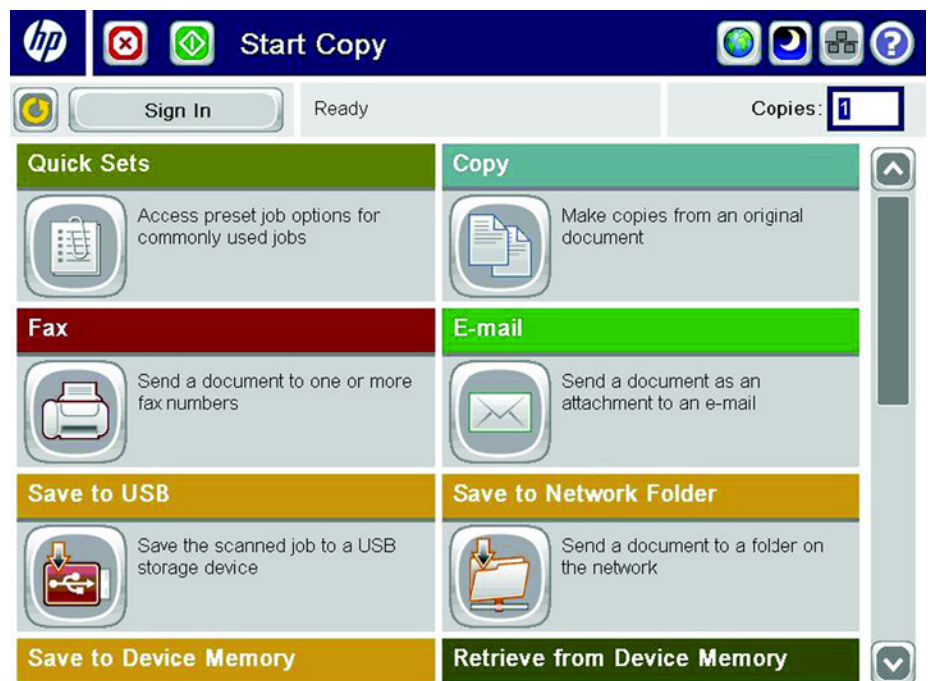
### Use HP Quick Sets to launch one-touch automated workflows

The MFP's digital sending capability lets users route documents to a variety of destinations like email recipients, network folders, or LAN fax addresses.<sup>1</sup> Some users, however, can become quickly overwhelmed with the number of possibilities. They might choose the wrong network folder, forget an email address, or pick the wrong file format for the scan, and the workflow breaks down before it has even begun.

HP Quick Sets let you launch document workflows and get it right every time—at the touch of a button. HP Quick Sets help by automating all of the steps of a complicated workflow, all on a large, full-colour touchscreen that is a joy to use. Users can find what they need right away, without standing at the device control panel searching for the appropriate settings.

In addition to scan destinations, you can preset other scan settings. These can include output file types such as PDF, JPEG, TIFF, MTIFF, XPS, and PDF/A formats. You can also specify security settings, such as encrypted PDFs to be delivered through encrypted and signed emails. Quick Set buttons can be easily created, labeled, and placed on the control panel home screen, so that you can quickly find the functions you need (examples are shown in the graphic below).

Quick Sets help IT by enabling them to promote or block access to certain device features. Calls to the helpdesk can be reduced when users have everything they need on the home screen and are restricted from accessing settings they shouldn't tamper with.



### Transform text in seconds

Let your MFP do the typing. With the Flow MFP M680z model, simplify editing for smaller jobs—and free up more time for high-priority tasks—using built-in optical character recognition.<sup>16</sup> For occasional use, built-in OCR technology allows you to convert scanned images to common file types with editable and searchable text. File types include searchable PDF, PDF/A, High-compression PDF, HTML, RTF (Microsoft Word compatible) OCR CSV, Unicode text, and TXT.



Scan to editable file

### Optional HP Digital Sending Software

The MFP supports HP Digital Sending Software (DSS)<sup>15</sup> as well as a variety of enterprise document management systems. HP Digital Sending Software enhances digital sending across HP LaserJet MFPs and HP Scanjet devices to provide a common administrative utility and

end-user interface across multiple devices and device types. This optional software runs as a service on a network server and allows multiple devices to send jobs through the server. It is not necessary to install any software or drivers on individual computers.

While the HP Color LaserJet Enterprise MFP M680 series includes robust digital sending features out of the box, HP DSS enables the following additional sending features:

- Optical character recognition (OCR) allows you to convert scanned images to common file types with editable and searchable text. File types include searchable PDF, PDF/A, High-compression PDF, HTML, XML, RTF (Microsoft Word compatible), XPS, and TXT. OCR capabilities also enhance the indexing and retrieval of documents. (These OCR capabilities are built-in, for occasional use, to the HP Color LaserJet Enterprise Flow MFP M680z.<sup>16</sup>)
- Remote copy (sending to a printing device)
- Custom keys allow users to effortlessly send documents to workflow destinations
- Configuration utility for managing digital sending and workflow capabilities
- Central email routing
- Central address book management where users gain access to their Microsoft Exchange contacts, as well as their private address books
- LDAP replication allows DSS to offload the LDAP directory activity by replicating relevant addressing information into the DSS address book
- Support for Filenet and Novell

For more information about HP DSS, please visit [hp.com/go/dss](http://hp.com/go/dss).

## Advanced faxing



Fax

Quickly and easily send and receive faxes with the HP LaserJet MFP Analog Fax 500 from the control panel icon.<sup>1</sup> Advanced fax features include:

- Efficiently process jobs at up to 33.6 kbps with the V.34 fax modem and help save time and money with standard JBIG compression that shortens call time.<sup>17</sup>
- Configure remotely via HP Web Jetadmin<sup>13</sup> or choose effortless setup with the Embedded Web Server fax configuration wizard.
- Quickly search, locate, and edit entries using speed dial.
- Use manual memory lock to save fax jobs at the MFP until a PIN is entered to release the stored documents. The scheduled memory lock lets you specify the days and times you want faxes to print or be held on the device.
- Take advantage of fax forwarding to receive business-critical faxes wherever you are.
- Easily retrieve data with fax polling (receive only). Request information stored on another machine to automatically receive a fax with the desired information. Fax polling is just what you need to efficiently gather frequently used documents, such as forms or reports.
- Use the fax call report to view convenient thumbnails of faxes and to archive important information, including the time sent, content, and destination.
- Get instant feedback on your fax job with the one-line status on the MFP's control panel.
- Send a fax from your computer without going to the device control panel with the Send Fax Driver.<sup>18</sup>
- Use optional HP Digital Sending Software to easily alternate between LAN and analog fax with a flexible configuration switch.<sup>15</sup> The switch delivers seamless integration in LAN or analog environments, without having to reinstall or reconfigure the fax accessory.

## Effortless copying



Copy

The MFP may be used as a standalone, walk-up copier, and you do not need to be connected to the network or a computer to make copies. In copy mode, the MFP functions as a standard photocopier—place your originals on the scanner glass or use the automatic document feeder and adjust all copy settings at the control panel.

# Invest in reliable performance

Achieve the results your business demands and tackle high-volume print jobs with this MFP's impressive paper capacity. Print professional-quality colour documents, fast—page after page.



Up to 3,100 sheets  
maximum input capacity

## Handle volume with ease

Run high-volume print jobs without frequent paper changes. A maximum input capacity of up to 3,100 sheets<sup>3</sup> helps meet the needs of your high-volume imaging and printing environment and handles large jobs efficiently. With the option to load a high volume of paper or load different sizes in each tray, you have the media support you need without having to reload paper as often.

- The multipurpose tray supports heavy custom media up to 220 g/m<sup>2</sup>.
- The compact M680dn model has a standard input capacity of up to 600 sheets. Increase capacity by adding one or two additional 500-sheet trays, a 500-sheet tray and storage cabinet, or the 2 x 500-sheet and 1,500-sheet paper feeders and stand.
- The M680f model has a standard input capacity of up to 1,100 sheets and includes a storage cabinet and stand, allowing you to move the device to the spot that's most convenient.
- The Flow M680z model comes standard with a 100-sheet multipurpose tray, a 500-sheet tray 2, and the 2 x 500-sheet and 1,500-sheet paper feeders and stand for an input capacity of 3,100 sheets.



Automatic two-sided  
printing

Built-in automatic two-sided printing helps reduce the cost of wasted paper with less effort, and virtually doubles the MFP's input capacity.

The Flow M680z model comes standard with a 900-sheet, 3-bin stapling mailbox attachment that conveniently staples and sorts large jobs for you. You can add the mailbox to the M680dn and M680f models as an optional accessory.

For more details about all optional accessories, see "Ordering information" on page 24.



Up to 42 ppm

## Don't wait, just print

Save time and keep your business moving with fast colour and black-and-white print speeds up to 42 ppm.<sup>5</sup> With 2 GB of memory and an 800 MHz processor, the MFP handles complex jobs quickly. The HP Color LaserJet Enterprise MFP M680 series features Instant-on Technology, enabling print jobs to begin as fast as 10.5 seconds from ready.<sup>19</sup> Cutting-edge fuser technology produces the first page faster when the device is coming out of low power mode, so your print job is done sooner.<sup>20</sup> In addition to helping you conserve energy and reduce your environmental impact, these extra seconds can deliver significant real-world performance advantages over time, helping users get more done.



Instant-on Technology

## Make an impression

Stand out with brilliant colour documents and professional-quality marketing collateral. HP print technology makes it easy.



Colour laser  
technology

### Produce exceptional results with HP ImageREt

With HP ImageREt 4800, the HP Color LaserJet Enterprise MFP M680 series delivers brilliant results. The system's foundation is comprised of key colour laser technologies, including HP ColorSphere toner, image enhancements, HP Smart printing technology, and high-resolution imaging. Designed together with Original HP print cartridges and HP papers, HP ImageREt produces exceptional output for your printed documents.

### Get consistent quality with HP EasyColor

HP EasyColor provides outstanding colour and black-and-white output—combining multiple technology enhancements into one easy-to-use feature. Included with the HP Universal Print Driver, this intelligent technology detects document content and automatically adjusts colour rendering to optimise photo quality and compress rasterised images for fast printing.<sup>21</sup>

HP EasyColor also recognises images in a document. It uses the generating application's image file pass-through to emulate what you see on the screen, and determines the necessary adjustments for optimal output quality. The results are improved colour consistency and sharper, more natural-looking photos.

Because image file sizes are optimised before being sent to the MFP, image-heavy documents—such as PowerPoint presentations—may print more quickly with HP EasyColor. And with smaller spool file sizes, network traffic is reduced. Best of all, you don't need to make a series of complex manual adjustments. HP EasyColor is automatically enabled, so you'll experience colour printing effortlessly.

### Achieve brilliant colour every time you print

Deepen the impact of your business documents and marketing materials with glossy, photo-quality colour. HP ColorSphere technology delivers consistent, professional colour. Melting and fusing technologies work in sync with HP ColorSphere toner to enable exceptional toner release and flow.

Producing a wide range of very specific colours and smooth colour transitions requires extreme precision throughout the printing process. HP's colour toner enables a finer range of colours because each toner particle conforms to an extremely consistent size and shape. This consistency allows toner particles to be placed on the page with the precision needed to produce a wide range of colours with the most subtle differences of shade.

HP ColorSphere toner is also designed to improve printing time. Its toner particles are chemically grown around an optimally sized wax core that is designed to work with the fuser's Instant-on Technology for fast image processing with optimum results.



### Match colours precisely with a PANTONE® calibrated MFP

Matching the colour on your computer screen to your printer's output can be quite complex, because printing devices and computer monitors use different methods to produce colour.

Fortunately, HP has partnered with PANTONE® to make this process easier for the average user. PANTONE® is the world-renowned authority on colour and the process of colour matching. Because the HP Color LaserJet Enterprise MFP M680 series is a PANTONE® Calibrated Printer, you can rely on it to help you produce consistent, reliable results, reduce time from pre-press to final output, and reduce waste with fewer mistakes.

## Stay productive with reliable cartridges

Produce presentations and business documents with standout colour and crisp, black text—and help save time and money by printing them in the office. Original HP toner cartridge technology delivers print shop-quality results on a wide range of papers designed for professional office printing. Because cartridges are designed for exceptional reliability, you avoid wasted supplies and expensive delays.

Original HP toner cartridges are a crucial component of the printing system.<sup>23</sup> The HP Color LaserJet Enterprise MFP M680 series comes with all print cartridges pre-installed—one black and one each cyan, yellow and magenta cartridges. The print cartridge and toner are integrated into one supply, which means that you refresh the imaging system every time you insert a new cartridge.

### Conveniently and easily order supplies over the Internet

HP SureSupply alerts you when your print cartridge is running low and helps you purchase online or locally through HP or a participating retailer. Only available with Original HP supplies; Internet access required. To learn more, visit [hp.com/go/SureSupply](http://hp.com/go/SureSupply).<sup>22</sup>

- Depend on trustworthy printing supplies to maintain productivity. Original HP LaserJet toner cartridges are engineered together with HP LaserJet printers to deliver consistently outstanding, reliable results for business printing.
- Track cartridge use and reorder easily. Intelligence built into Original HP toner cartridges makes monitoring usage and reordering supplies easy.
- Deepen the impact of your business documents and marketing materials with glossy, photo-quality colour. HP ColorSphere technology delivers consistent, professional colour.
- Help save money and minimise interruptions by using high-capacity Original HP toner cartridges, designed for greater value.<sup>6</sup>

## Enjoy peace of mind with legendary HP reliability

With a recommended monthly page volume of 3,000 up to 17,000 pages,<sup>24</sup> this MFP is built to stand up to the demands of today's fast-paced business environment and keep intervention rates low.

Prior to its introduction, a new HP Color LaserJet device undergoes rigorous HP testing to provide consistent, high-quality output. Tests are performed with a large sample of devices through each step of the design process, to be certain that the device measures up to HP standards. The result is a solid, reliable product that produces consistent, excellent print quality over its entire life.

This MFP includes a standard one-year limited onsite warranty. (Warranty may vary by country as required by law.) Additional warranty and service extension options are available. Go to [hp.com/support](http://hp.com/support) to learn about HP award-winning service and support options in your region.

### HP services—protect your technology investment and stay productive

Expand and extend your standard warranty with HP Care Pack Services. Our range of support services provides access to experts when you need them—so you can focus on what you care about. With HP Care Pack services you simply choose the level of support you need—no more, no less. A variety of options are available for the HP Color LaserJet MFP Enterprise M680 series.<sup>25</sup> For more details, see “Ordering information” on page 24. You can also select the HP Care Pack to best meet your needs at [hp.com/go/cpc](http://hp.com/go/cpc).



Maximise uptime



HP Care Pack Services

# Mobilise business printing

Give users the ability to connect and print almost anywhere work takes them. Simple and secure mobile printing saves time—keeping your business moving at top speeds.

## Print without wires



Wireless direct



Touch-to-print

It's a mobile world. Smart phones, tablets, and notebooks offer the flexibility to be productive at work, home, and on the go. Users want simple and reliable printing from any mobile platform or operating system, while IT managers need to control access to their network and devices. HP is proud to lead the way in mobile printing, offering mobile solutions for more users, use cases, and environments than any of our competitors.

### Enterprise mobile printing

The HP Color LaserJet Enterprise MFP M680 series comes ready to deploy optional HP wireless direct and HP touch-to-print.<sup>8,9</sup> You can add wireless direct and touch-to-print across your existing HP devices with either the HP Jetdirect 2800w, which installs in the hardware integration pocket, or with the HP NFC/Wireless 1200w Mobile Print Accessory, via USB.<sup>26</sup>

Both wireless direct and touch-to-print use a secure peer-to-peer connection, allowing users to print without accessing your corporate network. Print files are encrypted, and with a configurable passphrase, you don't have to worry about who is connecting to your office devices. Security and user access settings can be easily set up with HP Web Jetadmin<sup>13</sup> or the Embedded Web Server.

To use wireless direct printing, simply connect your mobile device to your MFP in the same way you would discover and connect to any public wireless network. With touch-to-print, you can walk up and print from your NFC-enabled smartphone or tablet with just a touch. NFC, or near field communication, automatically discovers the MFP for you, eliminating the guesswork and creating a one-to-one connection using wireless technology.<sup>27</sup>

If you're looking to deploy mobile printing across an existing multi-vendor fleet and need advanced security and management options, we offer the optional HP ePrint Enterprise solution. Learn more about HP's enterprise mobile printing solutions at [hp.com/go/businessmobileprinting](http://hp.com/go/businessmobileprinting).

### Enable printing anytime, from virtually anywhere

Even when employees are traveling, a printer can always be close at hand—with HP ePrint.<sup>11</sup> Empower them to print virtually anywhere from a smartphone, tablet, or notebook.<sup>2</sup> And with Apple AirPrint, enable employees to print from an iPad, iPhone, or iPod touch.<sup>12</sup>



HP ePrint

### Simplify printing from your mobile device

HP has been working closely with leading manufacturers of mobile devices to integrate printing into popular operating systems. In fact, HP currently offers the broadest support for embedded print functionality—across Apple iOS (AirPrint), Samsung Android, and Windows® 8, which means in most cases you won't have to download an app. Simply access the print function from the document you want to print, select your printer, and hit Print. For mobile devices without built-in print support, printing is just as simple, but users will first need to download the HP ePrint app or HP ePrint software.

Print from any Mopria-certified smartphone or tablet without setup, software or apps. Mopria is a mobile printing standard that enables easy mobile printing between Mopria-certified printers and mobile devices—without the need for a special app or software. Learn more at [mopria.org](http://mopria.org).<sup>2</sup>

### Share on a network

The HP Color LaserJet Enterprise MFP M680 series offers embedded wired networking capabilities that allow you to connect directly to a 10Base-T, 100Base-Tx, or 1000Base-T Ethernet network. You also have the option of adding secure wireless networking. For more information, please see "Ordering information" on page 24.

# Ready, set, grow

Keep your printing fleet looking forward. Easily expand and upgrade this MFP as solutions advance—and use simple, central management tools to save IT time and budget.

## Ready for the future

Work with the future in mind. HP FutureSmart firmware lets you upgrade your printers and MFPs on your schedule, whenever solutions advance. This provides investment protection because you can update to new features, such as workflow and security enhancements, without having to purchase new hardware. HP FutureSmart also can help reduce the time and cost to train new users. A consistent user interface and menu design across all HP FutureSmart devices—including the HP Color LaserJet Enterprise MFP M680 series—make the user experience intuitive and familiar. To learn more about HP FutureSmart firmware, visit [hp.com/go/futuresmart](http://hp.com/go/futuresmart).

## Expand your options

Be ready for the new—now. This MFP is designed to be compatible with emerging solutions, so you can upgrade and increase capabilities as needed. HP's cost-effective solution for hardware upgrades—the hardware integration pocket—allows you to integrate security solutions, such as card and badge readers. And HP's Open Extensibility Platform (OXF) creates a unified environment for software solutions that run on your HP Enterprise devices—providing sound investment protection, consistency for end users, and easier management. These HP innovations can help your MFP remain state-of-the-art long into the future.

## Simplicity all around

Make it easy for all to print with one common driver. The HP Universal Print Driver (UPD)<sup>21</sup> enables both mobile Microsoft device users and traditional desktop users to access the full features of nearly every HP device in your managed printing environment without the need for assistance.

Eliminate the clutter on your computer by replacing multiple print drivers with one versatile solution. Empower IT by dramatically reducing the number of drivers they have to manage—and by giving them the tools they need to improve efficiency. With the HP UPD, your IT team can easily adjust device settings to help reduce printing costs, improve security, and help meet environmental goals. For example, it's simple to push two-sided printing or quicker sleep times across the fleet. Plus, the valuable tools in the HP UPD Printer Administrator's Resource Kit help you save time and money by streamlining IT tasks, implementing printing policies, and monitoring usage across the enterprise. You can also use the HP UPD in tandem with HP Web Jetadmin to create fleet-wide managed printer lists, reports, and more.<sup>13</sup>

You can download this valuable fleet driver solution and the tools in the Printer Administrator's Resource Kit for free. For more information about how the HP Universal Print Driver can help you protect your imaging and printing investment, simplify management, and boost productivity, visit [hp.com/go/upd](http://hp.com/go/upd).



HP Web Jetadmin

### Simple one-to-one device management

The MFP can also be managed using the HP Embedded Web Server (EWS). Use a web browser to monitor status, configure network parameters, or access device features.

### Control colour access

Use HP Web Jetadmin<sup>13</sup> and the HP Universal Print Driver<sup>21</sup> to assign colour access by user, time of day, or application, or disallow colour output completely until it's needed for special projects. People who truly need to leverage the power of colour—such as your sales team and marketing department—can, while others automatically default to black-and-white output.<sup>28</sup>



Built-in security features

## Manage from a central location

The HP Color LaserJet Enterprise MFP M680 series is supported by HP Web Jetadmin. This single solution allows you to efficiently manage a wide variety of networked and PC-connected devices, including printers, multifunction products, and scanners. Remotely install, configure, troubleshoot, safeguard, and manage your devices—ultimately increasing business productivity by helping you save time, control costs, protect your assets, and provide a better return on your investment. A universal plug-in lets you support most features of new devices and apply corporate policies in one step—helping to save time and simplify device management.<sup>13</sup>

HP Web Jetadmin enables you to:

- Gain a clear picture of how many and what kinds of devices you have.
- Get visibility into your supplies usage, so you can make smarter purchasing decisions, reduce spending, and even track and allocate printing costs to individual departments or users.
- Simplify, and, in many cases, automate routine tasks. For example, you can apply fleet-wide policies to automatically configure new devices with the right printing and security settings when they're added to your network.
- Give your help desk staff the tools they need—such as automatic alerts—to resolve problems quickly, and often proactively, before a call is even received.
- Verify that your devices are up-to-date with the latest firmware and are properly configured (especially important for organisations that need to meet regulatory requirements).
- Use robust tracking and reporting tools to help you make better decisions about how your devices are deployed across your organisation, so you can make the most of your IT investments.
- Take advantage of additional options, like the HP Database Connectivity Module which works together with Web Jetadmin to help you establish and help achieve environmental goals.
- Get the ultimate in investment protection with HP Web Jetadmin Premium Support. This expanded service option gives your staff access to HP's dedicated software support engineers, who provide advice, usage recommendations, problem diagnosis, and more.

HP Web Jetadmin can benefit IT-managed print environments of all sizes, from large enterprises managing thousands of devices to small businesses with just a handful. For more information about how you can efficiently manage your entire imaging and printing fleet with HP Web Jetadmin—or to download this free software tool—visit [hp.com/go/wia](http://hp.com/go/wia).

## Protect your data

The HP Color LaserJet Enterprise MFP M680 series has a multitude of options when it comes to helping you secure your environment. You can count on support for a number of solutions, along with built-in security features, such as an HP High-Performance Secure Hard Disk and PIN printing options.

### Protect your MFP

As capabilities expand and devices become more integrated into your work, device security becomes increasingly important. This MFP features a number of options to help secure against undesired access:

- **Authentication and authorisation**—Authentication can help your organisation manage user access, help secure access to management utilities, and avoid unwanted device configurations. Authentication can also virtually eliminate wasted paper caused from unclaimed print jobs. Control access to the MFP, device settings, and functions, with options like:
  - **Multiple embedded authentication methods.** Print with a positive ID. With authentication options available from the device, you can configure Windows/Kerberos authentication, LDAP authentication, and user PIN authentication that integrates with your existing infrastructure.



- **Role-based device authentication and authorisation with HP FutureSmart.** With HP FutureSmart, you have more control than ever before over device security and permission settings. IT administrators can decide who can interact with certain device capabilities—helping to make printing more secure, control access, and uphold site security policies.
- **HP and third-party authentication solutions.** With optional solutions like HP Access Control, you can enable advanced authentication using proximity cards or smartcards. The hardware integration pocket on the control panel enables integration of select card readers.
- **Encrypted document authentication with HP UPD Secure Encrypted Print.**<sup>29</sup> With this solution, the user must enter a password (symmetric key) to encrypt when printing a document, and the same password to decrypt and print the document. This authentication protects the document across the entire process.
- **Physical device protection**—Both the device and the embedded HP High-Performance Secure Hard Disk can be physically secured from theft and tampering using a lock that requires a physical key for removal (this accessory must be purchased separately). In addition, host USB ports, network ports, and other physical ports can be disabled to prevent unauthorised use.

### Protect your data

Your MFP harbours sensitive information—make sure it's not at risk. HP offers security features at every stage in your work. An HP High-Performance Secure Hard Disk helps safeguard sensitive data sent to your MFP to keep you worry-free.

Protect data at rest with the following features:

- **Storage encryption**—Defend your data. The HP High-Performance Secure Hard Disk in the HP Color LaserJet Enterprise MFP M680 series provides full hardware encryption.
- **Secure Erase**—The MFP provides built-in capabilities for securely overwriting data stored on it, allowing sensitive data to be safely removed. HP offers multiple mechanisms to erase stored data, including functionality that conforms to U.S. National Institute of Science and Technology (NIST) Special Publication 800-88.
- **Password protection**—Stored passwords are encrypted to help provide protection of this critical information.

Protect data in transit with these features:

- **Secure Encrypted Print with HP UPD 5.3.1 or later**—For added security, choose end-to-end Secure Encrypted Print. HP UPD provides true symmetric AES256 print job encryption and decryption from the client to the page based on a user-defined password using FIPS 140 validated cryptographic libraries from Microsoft.
- **Network protection**—Network-transmitted data can be protected with IPsec and print jobs can also be encrypted using Internet Printing Protocol (IPP) over SSL/TLS.
- **Management safeguards**—Device management data that travels over the network between the device and the HP Embedded Web Server, HP Web Jetadmin, and other management tools can also be protected using SNMPv3 and SSL/TLS.

### HP security best practices

Since 2005, HP has published security best practice checklists for networked environments common to enterprises and small to medium businesses. HP recommends that customers incorporate recommended security configurations into their environments.

For more information, go to [hp.com/large/ipg/gateway/secure-4-steps.html](http://hp.com/large/ipg/gateway/secure-4-steps.html). For more information on HP security solutions, checklists, and assessment tools, please visit [hp.com/go/secureprinting](http://hp.com/go/secureprinting).

### Safeguard your physical documents

HP offers several optional solutions to help keep documents from falling into the wrong hands and help prevent fraud, such as:

- **Pull printing**—Have documents held and released only to the person who printed them. The HP Access Control Pull Printing solution helps protect sensitive data by requiring authentication at the device, and gives users the flexibility of pulling the documents from any device that is enabled with the solution.
- **Embed anti-fraud features**—This is a valuable tool in sensitive documents like prescriptions, birth certificates, or transcripts. Anti-fraud features are embedded before they are routed to the MFP and printed on plain paper by using the optional HP and TROY Secure Document Printing solution.



**Safeguard your fleet of HP devices with the solution Buyers Lab, LLC calls trailblazing—HP Imaging and Printing Security Center<sup>30</sup>**



**Rely on “the industry’s first policy-based imaging and printing compliance solution”<sup>30</sup>**

## Take the worry out of printing

Add security without adding employees. Use optional HP Imaging and Printing Security Center (IPSC), the industry’s first policy-based solution that helps you increase security, strengthen compliance, and reduce risk across your imaging and printing fleet.<sup>14</sup>

- Streamline the process to securely deploy and monitor devices by applying a single security policy across the fleet.
- Easily achieve baseline security with the HP Best Practices Base Policy—no security expertise required.
- Secure new HP devices as soon as they are added to your network with HP Instant-on Security.<sup>31</sup> The software automatically configures settings to comply with your corporate security policy.
- Actively maintain and verify compliance with your defined security policies by using HP IPSC automated monitoring and risk-based reporting.

To learn more about HP Imaging and Printing Security Center or to obtain a free 60-day trial, please visit [hp.com/go/ipsc](http://hp.com/go/ipsc).

### Device-based security management

For environments where few devices are deployed, IT may choose to manage each device individually via the HP Embedded Web Server management interface, which employs HTTPS for encryption and has access controls. In addition, HP provides security wizards to assist in proper security setup.

## Conserve resources without sacrificing performance

It has never been more important to save energy and resources, and HP technologies can help. HP's Design for the Environment initiative is driving improvements at every stage in the product lifecycle—helping reduce the amount of energy, paper, packaging, and materials used at HP and by our customers.

### Enjoy all the power you need with less waste

With its intelligent design, this MFP can help you meet your energy goals, without sacrificing performance:

- **Blue Angel compliant and ENERGY STAR® qualified**—Blue Angel is a German eco-label based on criteria in product design, energy consumption, chemical emissions, noise, recyclable design and take-back programs. Many of HP's most popular printing and imaging products qualify for this eco-label. HP equipment marked with the ENERGY STAR logo is qualified to the U.S. Environmental Protection Agency's ENERGY STAR specifications for imaging equipment. Additional ENERGY STAR information is listed at: [hp.com/go/energystar](http://hp.com/go/energystar).
- **HP Auto-On/Auto-Off Technology**—Stay productive and conserve resources with intelligence that can turn your MFP on when you need it and off when you don't.<sup>7</sup> You can even set custom times for your MFP to turn on and off, so it's ready when you are.
- **Instant-on Technology and Instant-on Copy**—HP LaserJet products with Instant-on Technology use an innovative, quick-heating fuser system that warms rapidly and cools quickly, helping you conserve energy.<sup>20</sup> The MFP's scanner requires no warm-up time.



Auto-On/Auto-Off Technology

### Save paper and reduce costs

With different HP solutions, you can save paper in a variety of ways:

- Get up to 50% paper savings with built-in automatic two-sided printing.
- HP Web Jetadmin<sup>13</sup> and the HP UPD<sup>21</sup> can help cut the cost of paper consumption by setting automatic two-sided printing as the default for individual devices or entire fleets. This means less waste, helping to save both natural and financial resources.
- Help improve your printing environmental impact with support for thin media printing. The HP Color LaserJet Enterprise MFP M680 series is compatible with office papers as light as 60 g/m<sup>2</sup>.



Automatic two-sided printing

### Reduce your impact—recycle HP cartridges

HP helps you recycle your Original HP cartridges—it's easy and there is no additional cost with the HP Planet Partners program, available in more than 50 countries and territories around the world.<sup>32</sup>

- HP offers postage-paid recycling envelopes and labels for most Original HP cartridges. Raw material from recycled cartridges can be used to manufacture new Original HP cartridges. To date, customers have returned more than 500 million cartridges to HP Planet Partners for recycling. Many Original HP cartridges have been engineered to use recycled plastic and still meet HP's demanding standards for quality and reliability.
- No Original HP cartridges returned through HP Planet Partners are ever sent to a landfill. Unlike HP Planet Partners, remanufacturing rarely prevents cartridges from ending up in landfills.<sup>32</sup> More than 90% of ink and toner cartridges sold by remanufacturers surveyed will ultimately be thrown away.<sup>33</sup> For more information, visit [hp.com/recycle](http://hp.com/recycle).



HP Planet Partners

# Technical specifications

	HP Color LaserJet Enterprise MFP M680dn	HP Color LaserJet Enterprise MFP M680f	HP Color LaserJet Enterprise Flow MFP M680z
<b>Product number</b>	CZ248A	CZ249A	CZ250A
<b>Control panel/data entry</b>	Pharos 20.3 cm (8-in) colour SVGA touchscreen display with gesture support; rotating (adjustable angle) display; illuminated Home button (for quick return to the Home menu)  Easy-access USB (supported file formats: Print: PDF, PS, Print Ready files (.prn, .pcl, .cht); Scan: PDF, JPEG, TIFF, MTIFF, XPS, PDF/A); Hardware Integration Pocket		Plus: External pull-out keyboard
<b>Print speed<sup>5</sup></b>	Black/colour: up to 42 ppm, A4 (45 ppm, letter); Duplex: up to 38 images per minute (ipm), A4 (40 ipm, letter)		
<b>First page out<sup>19</sup></b>	Black/colour: as fast as 10.5 seconds from ready (A4/letter)		
<b>Print resolution</b>	Black and colour: HP ImageRet 4800; 600 x 600 dpi; HP ProRes 1200 (1200 x 1200 dpi) PANTONE <sup>®</sup> calibrated		
<b>Scanning resolution</b>	Up to 600 dpi		
<b>ADF scan speed<sup>34</sup></b>			
Single-sided	A4/letter: Up to 60 ppm black-and-white and up to 45 ppm colour	A4: Up to 62 ppm black-and-white and up to 60 ppm colour Letter: Up to 65 ppm black-and-white and up to 63 ppm colour	
Two-sided	A4/letter: Up to 60 ipm black-and-white and up to 45 ipm colour	A4: Up to 86 ipm black-and-white and up to 63 ipm colour Letter: Up to 89 ipm black-and-white and up to 66 ipm colour	
<b>Features</b>			
Printing	HP EasyColor, PANTONE <sup>®</sup> Calibrated, digital send print preview, duplex, easy-access USB printing, print multiple pages per sheet (2, 4, 6, 9, 16), collation, watermarks, store print jobs		Plus: Job separating, stapling
Scanning	Flatbed colour scanner, up to 216 x 356 mm (8.5 x 14 in); 100-sheet ADF with two-sided, single-pass scanning  Advanced features: Optimise text/picture, image adjustments, job build, output quality setting, selectable scan resolution 75 to 600 dpi, auto-blank page removal, image preview, auto-colour detection, edge erase, deskew, auto-content-crop, HP Quick Sets		Plus: HP EveryPage with ultrasonic double-feed detection; auto-tone, auto-orientation, auto-page-crop
Digital sending	Scan to Email, Save-to-Network Folder, Save-to-USB drive, Send to FTP, Send to LAN Fax, Send to Internet Fax, Local Address Book, SMTP over SSL; File formats: PDF, JPEG, TIFF, MTIFF, XPS, PDF/A		Plus: Send to Microsoft SharePoint, OCR, TEXT (OCR), Unicode TEXT (OCR), RTF (OCR), Searchable PDF (OCR), Searchable PDF/A (OCR), HTML (OCR), CSV (OCR)
Copying	Auto scale, Reduce/Enlarge from scanner glass (25 to 400%), Collate, Auto colour detection, Two-sided copying, Job build, image adjustments (darkness, background clean-up, sharpness); Copy resolution: up to 600 x 600 dpi (flatbed), 300 x 600 dpi (ADF)		Plus: Stapling
Faxing <sup>1</sup>	Fax speed: 33.6 kbps; fax forwarding, receive fax polling, broadcasting to up to 100 locations, speed dial up to 100 numbers (with optional fax accessory), each with 100 destinations, auto-fax reduction, auto-redialling, stored faxes, fax archiving, scale-to-fit, fax address book, LAN/Internet fax, fax number confirmation; fax resolution: standard 100 x 100 dpi, superfine 300 x 300 dpi, 256 levels of grey		

	HP Color LaserJet Enterprise MFP M680dn	HP Color LaserJet Enterprise MFP M680f	HP Color LaserJet Enterprise Flow MFP M680z
<b>Processor</b>	800 MHz		
<b>Memory</b>	2 GB DDR2 (system memory)		
<b>Hard disk</b>	HP High-Performance Secure Hard Disk, minimum 320 GB; AES 256 hardware encryption or greater; Secure erase capabilities (Secure File Erase – Temporary Job Files, Secure Erase – Job Data, Secure ATA Erase – Disk)		
<b>Durability ratings</b>			
RMPV (recommended monthly page volume) <sup>24</sup>	3,000 pages to as high as 17,000 pages		
RMSV (recommended monthly scan volume)	14,250 pages to as high as 23,750 pages		26,750 pages to as high as 44,500 pages
Duty cycle <sup>35</sup>	Up to 120,000 pages (A4/letter)		
<b>Media specifications</b>			
Input capacity	Up to 600 sheets standard (up to 3,100 maximum) Tray 1: up to 100 sheets Tray 2: up to 500 sheets	Up to 1,100 sheets standard Tray 1: up to 100 sheets Tray 2: up to 500 sheets Tray 3: up to 500 sheets	Up to 3,100 sheets standard Tray 1: up to 100 sheets Trays 2, 3, 4: up to 500 sheets each Tray 5: up to 1,500 sheets
Output capacity	Up to 500 sheets		Up to 900 sheets
Two-sided printing	Automatic		
Media sizes	Tray 1: A4, A5, A6, B5 (JIS), B6 (JIS), 16K, postcard, D postcard, envelopes (C5, B5, C6, DL, ISO); letter, legal, 5 x 8 in, 8.5 x 13 in, statement, executive, postcard, 3 x 5 in, 4 x 6 in, envelopes (No. 9, No. 10, Monarch); Custom media sizes: 76 x 127 to 216 x 356 mm (3 x 5 to 8.5 x 14 in) Tray 2: A4, A5, B5 (JIS), 16K; letter, legal, 5 x 8 in, 8.5 x 13 in, statement, executive; Custom media sizes: 148 x 210 to 216 x 356 mm (5.83 x 8.27 to 8.5 x 14 in) Duplex: A4, A5, B5 (JIS); letter, legal, 5 x 8 in, 8.5 x 13 in ADF: A4, A5, B5; letter, legal, executive		
		Tray 3: A4, A5, B5 (JIS), 16K; letter, legal, 5 x 8 in, 8.5 x 13 in, statement, executive; Custom media sizes: 148 x 210 to 216 x 356 mm (5.83 x 8.27 to 8.5 x 14 in)	Trays 3-4: A4, A5, B5 (JIS), 16K; letter, legal, 5 x 8 in, 8.5 x 13 in, statement, executive; Custom media sizes: 148 x 210 to 216 x 356 mm (5.83 x 8.27 to 8.5 x 14 in) Tray 5: A4, A5, B5 (JIS), 16K; letter, legal, 5 x 8 in, 8.5 x 13 in, statement, executive
Media weights	Tray 1: 60 to 220 g/m <sup>2</sup> (16 to 58 lb bond) Tray 2, duplex: 60 to 120 g/m <sup>2</sup> (16 to 32 lb bond), 105 to 220 g/m <sup>2</sup> (28 to 58 lb bond) glossy paper ADF: 60 to 120 g/m <sup>2</sup> (16 to 32 lb bond)		
		Tray 3: 60 to 120 g/m <sup>2</sup> (16 to 32 lb bond), 105 to 220 g/m <sup>2</sup> (28 to 58 lb bond) glossy paper	Trays 3-5: 60 to 120 g/m <sup>2</sup> (16 to 32 lb bond), 105 to 220 g/m <sup>2</sup> (28 to 58 lb bond) glossy paper
Media types	Paper (plain, light, bond, recycled, mid-weight, heavy, mid-weight glossy, heavy glossy, extra heavy, extra heavy glossy, cardstock, card glossy, pre-printed, pre-punched, coloured, rough), colour transparency, labels, letterhead, envelope, opaque film, user-defined		
<b>Connectivity</b>	1 Hi-Speed device USB 2.0; 2 Host USB 2.0 (for third party connections); 1 Jetlink (for finisher connection); 1 Accessory (for Kensington Lock); 1 Gigabit Ethernet 10/100/1000; 1 foreign interface harness		
	Plus: 1 Fax		
<b>Mobile printing</b>	HP ePrint, Apple AirPrint, Mobile apps; Optional: Wireless direct printing, touch-to-print <sup>36</sup>		
<b>Network capabilities</b>	Standard: Via HP Jetdirect Ethernet embedded print server which supports: 10/100/1000Base-T; 802.3az (EEE) support on Fast and Gigabit Ethernet Links; IPsec; Optional: 802.11b/g/n wireless networking <sup>36</sup>		
<b>Print languages</b>	HP PCL 6, HP PCL 5e, HP postscript level 3 emulation, PDF, PDF and AirPrint (URF and PDF)		
<b>Fonts</b>	105 internal TrueType fonts scalable in HP PCL, 92 internal scalable fonts in HP Postscript level 3 emulation (Euro symbol built-in); 1 internal Unicode Fonts (Andale Mono WorldType); 2 Internal Windows Vista® 8 Fonts (Calibri, Cambria); additional font solutions available via third-party flash memory cards; HP LaserJet Fonts and IPDS Emulation available at <a href="http://hp.com/go/laserjetfonts">hp.com/go/laserjetfonts</a>		

	<b>HP Color LaserJet Enterprise MFP M680dn</b>	<b>HP Color LaserJet Enterprise MFP M680f</b>	<b>HP Color LaserJet Enterprise Flow MFP M680z</b>
<b>Network protocols</b>	IPv4/IPv6: Apple Bonjour Compatible (Mac OS 10.2.4 and later), SNMPv1/v2c/v3, HTTP, HTTPS, FTP, TFTP, Port 9100, LPD, WS Discovery, IPP, Secure-IPP, IPsec/Firewall IPv6: DHCPv6, MLDv1, ICMPv6 IPv4: Auto-IP, SLP, Telnet, IGMPv2, BOOTP/DHCP, WINS, IP Direct Mode, WS Print Other: NetWare NDS, Bindery, NDPS, iPrint		
<b>Security</b>	Identity Management: Kerberos authentication, LDAP authentication, 1,000 user PIN codes, optional HP and third-party advanced authentication solutions (e.g., badge readers) Network: IPsec/firewall with Certificate, Pre-Shared Key, and Kerberos authentication, Supports WJA-10 IPsec configuration Plug-in, 802.1X authentication (EAP-PEAP, EAP-TLS), SNMPv3, HTTPS, Certificates, Access Control List Data: Storage Encryption, Encrypted PDF and Email (uses FIPS 140 validated cryptographic libraries from Microsoft), Secure Erase, SSL/TLS (HTTPS), Encrypted Credentials Device: Security lock slot, USB port disablement, Hardware integration pocket for security solutions Security Management: Compatible with HP Imaging and Printing Security Center		
<b>Compatible operating systems<sup>37</sup></b>	Windows XP SP3 or greater (32-bit/64-bit), Windows Vista (32-bit/64-bit), Windows 7 (32-bit/64-bit), Windows 8 (32-bit/64-bit), Windows Server 2003 SP2 or greater (32-bit/64-bit), Windows Server 2008 (32-bit/64-bit), Windows Server 2008 R2 (64-bit), Windows Server 2012 (64-bit) Mac OS X 10.6 Snow Leopard, 10.7 Lion, 10.8 Mountain Lion, 10.9 Maverick For the latest operating system support see: AirPrint ( <a href="http://support.apple.com/kb/HT4356?viewlocale=en_US">support.apple.com/kb/HT4356?viewlocale=en_US</a> ); Android ( <a href="http://android.com">android.com</a> ); Citrix and Windows Terminal Services ( <a href="http://hp.com/go/upd">hp.com/go/upd</a> ); HP ePrint Software Driver ( <a href="http://hp.com/go/eprintsoftware">hp.com/go/eprintsoftware</a> ); Linux ( <a href="http://hplip.net">hplip.net</a> ); Novell ( <a href="http://novell.com/iprint">novell.com/iprint</a> ); SAP device types ( <a href="http://hp.com/go/sap/drivers">hp.com/go/sap/drivers</a> ); SAP Print ( <a href="http://hp.com/go/sap/print">hp.com/go/sap/print</a> ); UNIX ( <a href="http://hp.com/go/unix">hp.com/go/unix</a> ); UNIX Jetdirect ( <a href="http://hp.com/go/jetdirectunix_software">hp.com/go/jetdirectunix_software</a> )		
<b>System requirements, Windows</b>	Windows 8, Windows 7 (SP1 or higher), Windows Vista, Windows XP (SP2 or higher), Windows Server 2003 (SP1 or higher), Windows Server 2008, Windows Server 2008 R2 (64 bit), Windows Server 2012 (64-bit); 200 MB available hard disk space; CD-ROM or DVD drive, or Internet connection; Dedicated universal serial bus (USB 1.1 or 2.0), or network connection; Operating system compatible hardware system requirements see <a href="http://microsoft.com">microsoft.com</a>		
<b>System requirements, Macintosh</b>	Mac OS X 10.6 Snow Leopard, OS X 10.7 Lion, OS X 10.8 Mountain Lion, OS X 10.9 Maverick; 1 GB of available hard disk space; CD-ROM or DVD drive, or Internet connection; Dedicated universal serial bus (USB 1.1 or 2.0), or network connection; Operating system compatible hardware system requirements see <a href="http://apple.com">apple.com</a>		
<b>Dimensions (width x depth x height)</b>	Minimum (all trays closed): 840 x 632 x 585 mm (33 x 25 x 23 in) Maximum: 1245 x 887 x 864 mm (49 x 34.9 x 33.5 in)	Minimum (all trays closed): 840 x 681 x 1135 mm (33 x 26.8 x 44.7 in) Maximum: 1245 x 994 x 1416 mm (49 x 39.1 x 55.8 in)	Minimum (all trays closed): 1020 x 681 x 1180 mm (40.2 x 26.8 x 46.5 in) Maximum: 1403 x 1010 x 1416 mm (55.3 x 39.8 x 55.8 in)
<b>Weight (with print cartridges)</b>	56.5 kg (124.3 lb)	77.9 kg (171.4 lb)	87.0 kg (191.3 lb)
<b>What's in the box</b>	HP Color LaserJet Enterprise MFP M680, Black (~11,500 pages), <sup>6</sup> Cyan, Magenta, and Yellow HP Color LaserJet Toner Cartridges (~16,500 pages), <sup>6</sup> CD with software drivers and documentation, Documentation (Hardware Install Guide), Power cord, HP Jetdirect Gigabit Ethernet Print Server (embedded), 100-sheet multipurpose tray 1, 500-sheet input tray 2, Support flyer, Automatic duplexer (built-in), Encrypted Hard Drive		
		Plus: 500-sheet paper input with cabinet, Fax, Fax cable	Plus: 2 x 500-sheet and 1,500-sheet paper feeders with stand, Fax, Fax cable, 900-sheet 3-bin stapling mailbox
<b>Software included</b>	Windows: HP Installer/Uninstaller, HP PCL 6 print driver; Wizard, Scan to Folder Setup Wizard, Scan to email setup Wizard, HP Send Fax, DXP (Device Experience), HP Help and Learn Center, Product Registration Assist. Mac: HP Installer/Uninstaller, HP Postscript driver, HP Utility, HP Alerts, HP Firmware Updater		
<b>Warranty</b>	HP one-year onsite warranty backed by HP Customer Care with 24 x 7 web support and business hour phone support		
<b>HP SureSupply<sup>22</sup></b>	Supported		

## Environmental and power specifications

	HP Color LaserJet Enterprise MFP M680dn	HP Color LaserJet Enterprise MFP M680f	HP Color LaserJet Enterprise Flow MFP M680z
<b>Environmental ranges</b>			
Temperatures	Operating: 15 to 30° (59 to 86° F); Storage: 0 to 35° C (32 to 95° F); Recommended: 17 to 25° C (62.6 to 77° F)		
Relative humidity range	Operating: 10 to 80%; Non-operating: 10 to 90%; Recommended: 30 to 70%		
<b>Acoustic power emissions<sup>38</sup></b>			
Ready mode: 5.3 B(A); Active printing: 7.1 B(A); Active copying: 7.3 B(A); Active scanning: 7.1 B(A)			
<b>Acoustic pressure emissions (bystander)</b>			
Ready mode: 36 dB(A); Active printing: 54 dB(A); Active copying: 56 dB(A); Active scanning: 56 dB(A)			
<b>Power specifications</b>			
Blue Angel; ENERGY STAR 2.0; CECP; EPEAT® Silver			
Power supply required	Input voltage: 220 to 240 VAC (+/- 10%), 50/60 Hz (+/- 2 Hz) (Not dual voltage, power supply varies by part number with # Option code identifier)		
Power consumption <sup>39</sup>	Printing: 797 watts; Ready: 83 watts; Sleep: 7 watts; Auto-off/Wake on LAN: 1.5 watts; Manual Off: 0.1 watts; Auto-off/Manual On: 0.1 watts		
Typical Electricity Consumption (TEC)	5.69 kWh/week		
Energy-saving features	HP Auto-On/Auto-Off Technology, Schedule On and Off technology, Instant-on Technology		
<b>Safety and regulatory compliance</b>			
IEC 60950-1:2005 +A1; EN60950-1: 2006 +A1:2009 +A1:2010 +A12:2011; IEC 60825-1:2007 (Class 1 Laser/Led Product); EN 60825-1:2007 (Class 1 Laser/LED Product); UL/cUL Listed (USA/Canada); GS Certificate (Germany, Europe); IEC 62479:2010; EN 62479:2010; Low Voltage Directive 2006/95/EC with CE Marking (Europe); other safety approvals as required by individual countries			
<b>Electromagnetic emission standard</b>			
CISPR 22:2008 / EN 55022:2010 (Class A), EN 61000-3-2 :2006 +A1:2009 +A2:2009, EN 61000-3-3 :2008, EN 55024:2010, FCC Title 47 CFR, Part 15 Class A (USA), ICES-003, Issue 4 (Canada), EMC Directive 2004/108/EC with CE Marking (Europe), other EMC approvals as required by individual countries			
<b>Telecom Compliance Certification</b>		Fax Telecom: ES 203 021; R&TTE Directive 1999/5/EC (Annex II) with CE Marking (Europe); FCC Part 68; Industry Canada CS03; NOM-151-SCTI-1999 (Mexico); PTC-200 (New Zealand); other Telecom approvals as required by individual countries	

# Ordering information

Use accessories and supplies specifically designed for the printer to help provide efficient performance. To order the accessories and supplies listed here, go to [hp.com](http://hp.com). If you do not have access to the Internet, contact your qualified HP dealer, or call HP (U.S.) at (800) 282-6672. To contact HP by country go to [welcome.hp.com/country/us/en/wwcontact\\_us.html](http://welcome.hp.com/country/us/en/wwcontact_us.html).

<b>Product</b>	HP Color LaserJet Enterprise MFP M680dn	CZ248A
	HP Color LaserJet Enterprise MFP M680f	CZ249A
	HP Color LaserJet Enterprise Flow MFP M680z	CZ250A
<b>Supplies</b>	HP 652A Black Original LaserJet Toner Cartridge (~11,500 pages) <sup>6</sup>	CF320A
	HP 653X High Yield Black Original LaserJet Toner Cartridge (~21,000 pages) <sup>6</sup>	CF320X
	HP 653A Cyan Original LaserJet Toner Cartridge (~16,500 pages) <sup>6</sup>	CF321A
	HP 653A Yellow Original LaserJet Toner Cartridge (~16,500 pages) <sup>6</sup>	CF322A
	HP 653A Magenta Original LaserJet Toner Cartridge (~16,500 pages) <sup>6</sup>	CF323A
	HP Staple Cartridge Refill	C8091A
	HP Color LaserJet 110V Fuser Kit	CE246A
	HP Color LaserJet 220V Fuser Kit	CE247A
	HP Color LaserJet Transfer Kit	CE249A
HP Color LaserJet Toner Collection Unit	CE265A	
<b>Accessories</b>	HP Color LaserJet 500-sheet Paper Tray	CZ261A
	HP Color LaserJet 500-sheet Paper Feeder and Cabinet	CZ262A
	HP Color LaserJet 2 x 500-sheet Paper Feeder and 1,500-sheet High-capacity Paper Feeder and Stand	CZ263A
	HP 900-sheet 3-bin Stapling Mailbox	CZ264A
	HP Jetdirect ew2500 802.11b/g Wireless Print Server	J8021A
	HP Jetdirect 2700w USB Wireless Print Server <sup>36iz</sup>	J8026A
		J8029A
	HP Jetdirect 2800w NFC/Wireless Direct Accessory <sup>36</sup>	E5K46A
	HP NFC/Wireless 1200w Mobile Print Accessory	A7W12A
	HP LaserJet Keyboard Overlay Kit for Simplified Chinese and Traditional Chinese	A7W13A
HP LaserJet Keyboard Overlay Kit-Danish/French-Switzerland/German-Switzerland	CC487A	
HP LaserJet MFP Analog Fax Accessory 500		
<b>HP Care Pack Services<sup>25</sup></b> Select the right HP Care Pack Service for your printer at <a href="http://hp.com/go/cpc">hp.com/go/cpc</a>	HP 3-year Next Business Day Color LaserJet M680 MFP Hardware Support	U1PE9E
	HP 4-year Next Business Day Color LaserJet M680 MFP Hardware Support	U1PF0E
	HP 5-year Next Business Day Color LaserJet M680 MFP Hardware Support	U1PF1E
	HP 3-year 4-hour 9x5 Color LaserJet M680 MFP Hardware Support	U1PF2E
	HP 1-year Post Warranty Next Business Day Color LaserJet M680 MFP Hardware Support	U1PH0PE
	HP 2-year Post Warranty Next Business Day Color LaserJet M680 MFP Hardware Support	U1PH1PE
	HP 1-year Post Warranty 4-hour 9x5 Color LaserJet M680 MFP Support	U1PH2PE
<b>Paper</b>	Europe: <a href="http://hp.com/go/learnaboutsupplies">hp.com/go/learnaboutsupplies</a>	
<b>Solutions</b>	HP Web Jetadmin: <a href="http://hp.com/go/wja">hp.com/go/wja</a>	
	HP Universal Print Driver: <a href="http://hp.com/go/upd">hp.com/go/upd</a>	
	HP Imaging and Printing Security Center: <a href="http://hp.com/go/ipsc">hp.com/go/ipsc</a>	
	HP LaserJet Fonts, Barcodes, and IPDS Emulation available at <a href="http://hp.com/go/laserjetfonts">hp.com/go/laserjetfonts</a> To learn more about available infrastructure, management, and workflow solutions, visit <a href="http://hp.com/go/qsc">hp.com/go/qsc</a>	



## Notes

- <sup>1</sup> Fax functionality is not included with the HP Color LaserJet Enterprise MFP M680dn but may be purchased separately as an optional accessory.
- <sup>2</sup> Local printing requires mobile device and printer to be on the same wireless network or have a direct wireless connection. Wireless performance is dependent on physical environment and distance from access point. Wireless operations are compatible with 2.4 GHz operations only. Remote printing requires an Internet connection to an HP web-connected printer. App or software and HP ePrint account registration may also be required. Wireless broadband use requires separately purchased service contract for mobile devices. Check with service provider for coverage and availability in your area. See [hp.com/go/businessmobileprinting](http://hp.com/go/businessmobileprinting) for more details. Mopria-certified devices adhere to a common standard that enables easy mobile printing with little or no setup.
- <sup>3</sup> Optional paper trays to reach 3,100-sheet capacity and the three-bin stapling mailbox may be purchased separately for the HP Color LaserJet Enterprise MFP M680f. Both features are standard on the HP Color LaserJet Enterprise Flow MFP M680z.
- <sup>4</sup> HP EveryPage, integrated keyboard, and scan to Microsoft SharePoint are available on the HP Color LaserJet Enterprise Flow MFP M680z only.
- <sup>5</sup> Measured using ISO/IEC 24734, excludes first set of test documents. For more information see [hp.com/go/printerclaims](http://hp.com/go/printerclaims). Exact speed varies depending on the system configuration, software application, driver, and document complexity.
- <sup>6</sup> Average colour composite (C/M/Y) and black declared yields based on ISO/IEC 19798 and continuous printing. Actual yields vary considerably based on images printed and other factors. For details see [hp.com/go/learnabouteprints](http://hp.com/go/learnabouteprints).
- <sup>7</sup> HP Auto-On/Auto-Off Technology capabilities are subject to printer and settings; may require a firmware upgrade.
- <sup>8</sup> Wireless direct printing requires purchase of optional module. Mobile device may require an app or driver. Wireless performance is dependent on physical environment and distance from the printer. For details, see [hp.com/go/businessmobileprinting](http://hp.com/go/businessmobileprinting).
- <sup>9</sup> Touch-to-print capability requires purchase of optional module. Mobile device must support near-field communications-enabled printing. For a list of supported devices, see [hp.com/go/businessmobileprinting](http://hp.com/go/businessmobileprinting).
- <sup>10</sup> Scanning to SharePoint and/or the cloud requires a wireless access point and an Internet connection to the printer. Services may require registration. Availability varies by country, language, and agreements, and requires a firmware upgrade. For details, see [hp.com/go/eprintcenter](http://hp.com/go/eprintcenter).
- <sup>11</sup> Requires an Internet connection to the printer. Feature works with any connected Internet- and email-capable device. Requires HP Web Services Account Registration. Print times may vary. For a list of supported documents and image types, see [hp.com/go/eprintcenter](http://hp.com/go/eprintcenter). And for additional solutions, see [hp.com/go/businessmobileprinting](http://hp.com/go/businessmobileprinting). Please note that while your mobile device is directly connected to the printer, access to content that requires Internet support (such as web pages or documents stored in the cloud) may not be supported while in HP wireless direct mode.
- <sup>12</sup> Supports the following devices running iOS 4.2 or later: iPad®, iPad® 2, iPhone® (3GS or later), iPod touch® (3rd generation or later). Works with HP's AirPrint™ enabled printers and requires the printer be connected to the same network as your iOS device. Wireless performance is dependent upon physical environment and distance from the access point. AirPrint, the AirPrint Logo, iPad, iPhone, and iPod touch are trademarks of Apple® Inc., registered in the U.S. and other countries.
- <sup>13</sup> HP Web Jetadmin is free and can be downloaded at [hp.com/go/webjetadmin](http://hp.com/go/webjetadmin). Universal device plug-in is offered with HP Web Jetadmin 10.3 SR4 and higher.
- <sup>14</sup> HP Imaging and Printing Security Center must be purchased separately.
- <sup>15</sup> HP Digital Sending Software is optional and must be purchased separately.
- <sup>16</sup> Embedded OCR is available only on the HP Color LaserJet Enterprise Flow MFP M680z and is intended for occasional use. For high-volume OCR usage, consider optional server-based Digital Sending Software (DSS).
- <sup>17</sup> Based on standard ITU-T test image #1 at standard resolution. More complicated pages or higher resolution will take longer and use more memory.
- <sup>18</sup> For network-connected devices only.
- <sup>19</sup> Exact speed varies depending on the system configuration, software application, driver and document complexity.
- <sup>20</sup> Compared with products that use traditional fusing.
- <sup>21</sup> The HP Universal Print Driver is free and available for download at [hp.com/go/upd](http://hp.com/go/upd).
- <sup>22</sup> HP SureSupply alerts you when your print cartridge is running low and helps you purchase online or locally through HP or a participating retailer. Program features and availability may vary by country. For more information, visit [hp.com/go/SureSupply](http://hp.com/go/SureSupply); only available with Original HP supplies; internet access required.
- <sup>23</sup> Using genuine HP supplies ensures availability of all HP printing features.
- <sup>24</sup> HP recommends that the number of printed pages per month be within the stated range for optimum device performance, based on factors including supplies replacement intervals and device life over an extended warranty period.
- <sup>25</sup> Service levels and response times for HP Care Pack Services may vary depending on your geographic location. Service starts on date of hardware purchase. Restrictions and limitations apply. For details, visit [hp.com/go/cpc](http://hp.com/go/cpc).
- <sup>26</sup> HP Jetdirect 2800w is supported by most HP Enterprise devices with FutureSmart firmware. The HP LaserJet Enterprise M4555 MFP series, HP Color LaserJet Enterprise CM4540 MFP series, and HP Color LaserJet Enterprise CP5550 Printer series do not support the HP Jetdirect 2800w, but do support the HP 1200w Mobile Print Accessory. HP 1200w Mobile Print Accessory works with HP Officejet Mobile 100/150 printers and HP LaserJet printers and multifunction products (MFPs) introduced in 2008 or later that are equipped with a USB port.
- <sup>27</sup> Please note that while your mobile device is directly connected to the printer, access to content that requires Internet support (such as web pages or documents stored in the cloud) may not be supported while in HP wireless direct mode.
- <sup>28</sup> Colour access control capabilities vary from device to device.
- <sup>29</sup> Encrypted printing requires use of HP Universal Print Driver 5.3.1 Secure Encrypted Print feature.
- <sup>30</sup> Buyer's Lab, Inc. Outstanding Achievement in Security Solutions award, Winter, 2013. For details, see [hp.com/large/ing/gateway/security\\_center](http://hp.com/large/ing/gateway/security_center).
- <sup>31</sup> HP Instant-on Security is part of HP Imaging and Printing Security Center, which must be purchased separately.
- <sup>32</sup> Program availability varies. Original HP cartridge return and recycling is currently available in more than 50 countries, territories, and regions in Asia, Europe, and North and South America through the HP Planet Partners program. For more information, visit [hp.com/recycle](http://hp.com/recycle).
- <sup>33</sup> InfoTrends, 2011 Western Europe Supplies Recycling study. Study commissioned by HP. Results based on interviews with 12 remanufacturers and brokers. For details, see [hp.com/go/suppliesstudy-emea](http://hp.com/go/suppliesstudy-emea).
- <sup>34</sup> Scan speeds measured from ADF. Actual processing speeds may vary depending on scan resolution, network conditions, computer performance, and application software.
- <sup>35</sup> Duty cycle is defined as the maximum number of pages per month of imaged output. This value provides a comparison of product robustness in relation to other HP LaserJet or HP Color LaserJet devices, and enables appropriate deployment of printers and MFPs to satisfy the demands of connected individuals or groups.
- <sup>36</sup> HP Jetdirect 2800w (J8029A) and HP Jetdirect 2700w (J8026A) accessories cannot be installed at the same time.
- <sup>37</sup> Windows Installer has the same Operating System support as the printer driver except the following: Windows XP (SP3 or higher) (32-bit only); Windows Server 2003 (SP2 or higher) (32-bit only); Windows Vista Starter not supported in Driver nor Installer; HP Software Installer CD for Windows - The HP PCL 6 discrete driver and .NET 3.5 SP1 are installed for Windows operating systems along with other optional software. .NET 4.0 is included in Windows 8/Server 2012. HP Software for Mac is no longer included on the CD, but can be downloaded from [hp.com](http://hp.com) - the Mac driver and Mac Utility are installed for Mac operating systems.
- <sup>38</sup> Acoustic values are subject to change. For current information see [hp.com/support](http://hp.com/support). Configuration tested: base model, simplex printing, A4 paper at an average of 42 ppm.
- <sup>39</sup> Power requirements are based on the country/region where the printer is sold. Do not convert operating voltages. This will damage the printer and void the product warranty.

## Sign up for updates

[hp.com/go/getupdated](http://hp.com/go/getupdated)



Share with colleagues



Rate this document

© Copyright 2014 Hewlett-Packard Development Company, L.P. The information contained herein is subject to change without notice. The only warranties for HP products and services are set forth in the express warranty statements accompanying such products and services. Nothing herein should be construed as constituting an additional warranty. HP shall not be liable for technical or editorial errors or omissions contained herein.

AirPrint and the AirPrint Logo are trademarks of Apple Inc. OS X iPad, iPhone, and iPod touch are trademarks of Apple Inc., registered in the U.S. and other countries. ENERGY STAR and the ENERGY STAR mark are registered U.S. marks. Microsoft, Windows, Windows XP, Windows Vista, and SharePoint are U.S. registered trademarks of Microsoft Corporation. PANTONE is the property of PANTONE, Inc. Unix is a registered trademark of The Open Group.

