

# SHARP

Be Original.

## AR-M560N AR-M460N

Digital Multifunction System

**A Business-Smart Way to Balance Cost and Function**



# Budget-Friendly MFP Streamlines Document Tasks

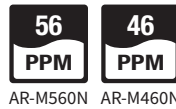
Built to deliver reliable copy/print performance at an affordable price, the B/W AR-M560N/M460N offers a short warm-up time, fast output, and easy operation from a colour LCD control panel. And while this energy-efficient MFP handles fundamental document tasks with ease, a variety of finishing options can be added to save additional time and effort.



## PRODUCTIVITY

### Super-Efficient Output

The AR-M560N/M460N delivers a fast output of 56<sup>\*1</sup>/46 ppm<sup>\*2</sup>. And the first copy comes out in just 3.7/3.9 seconds to save valuable time when performing multiple short-run jobs.



\*1: 51 ppm for AR-M560N when equipped with MX-FN10  
\*2: A4 (8 1/2" x 11"), long-edge feeding

### Standard-Equipped RSPF and Duplex Module

The AR-M560N/M460N comes equipped with a 100-sheet RSPF (reversing single pass feeder) and has a built-in stackless duplex module for making two-sided copies and printouts.



### Professional-Looking Finishing

The AR-M560N/M460N can accommodate a range of finishing options to suit a variety of workplaces and applications. For basic sorting/stapling of documents, two types of handy finishers are available: the space-efficient Finisher can be added on without taking up much room, while the large-capacity Finisher has output trays that can hold up to 4,000 sheets. Saddle Stitch Finishers also come in two types: one has an output tray capacity of up to 1,000 sheets, while the other boasts a capacity of up to 4,000 sheets. In addition to basic sorting/stapling, both types of Saddle Stitch Finishers can fold/staple documents of up to 15 sheets to make completed booklets. Punch Modules are available for each finisher.



Space-efficient Finisher



1,000-sheet Saddle Stitch Finisher



4,000-sheet Saddle Stitch Finisher

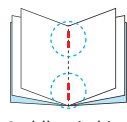
#### Job Finishing Samples



Stapling



Hole punching



Saddle stitching

### Long-Paper (Banner) Printing\*

The optional Long Paper Feeding Tray accommodates extra-long paper up to 1,200 mm—expanding the range of print products to include large display-window ads, banner signs, and more.

\*Contact a Sharp customer representative for details on using this function.

### Extra Paper Capacity

For high-volume work, the AR-M560N/M460N can accommodate an optional stand with 500 + 2,000-sheet paper drawer for a total capacity of 6,600 sheets. When a tray runs out of paper, the Auto Tray Switching function automatically switches to another paper tray filled with the same size paper, allowing you to do extra-large volume jobs without worry.



### Scan to USB Drive

The AR-M560N/M460N enables full-colour scanning directly to USB drives via a USB port located below the control panel.



### Job Build for Large-Volume Scanning

The AR-M560N/M460N easily handles large-volume copy jobs exceeding the RSPF's 100-sheet<sup>\*1</sup> capacity. For example, a 270-sheet original can be scanned as batches of 100 + 100 + 70 sheets and automatically stored in the MFP's memory<sup>\*2</sup>. Users can then print the entire document in a single run.

\*1: A4 (8 1/2" x 11"), 80 g/m<sup>2</sup>

\*2: The number of pages that can be stored for the Job Build function depends on the machine's memory capacity and other conditions.

### Other Key Features

- **Direct printing** of TIFF/JPEG files
- **Card Shot** enables easy copying and scanning of both sides of a card onto a single page
- **Multi-Shot** copying and **N-up** printing
- **Mixed Size Original Copy** automatically distinguishes documents of mixed sizes\* fed through the RSPF

\*Some restrictions apply when combining paper sizes of different format series.

## SUPERB IMAGE QUALITY

### High-Resolution Output

The AR-M560N/M460N's digital smoothing technology enhances the 600 dpi print and copy resolution to the equivalent of 9,600 x 600 dpi for incredibly smooth reproduction of fine lines. Fine-grained photographs, detailed illustrations and graphs, and small text come out crisp and clear.

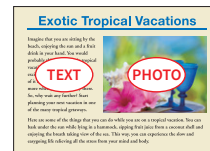
### Stable Halftones and Smooth Gradations

Halftone process control employs an image density sensor to enhance the stability and accuracy of halftones, thereby bringing consistently high image quality to copy/print jobs. Meanwhile, 4-bit depth, rated at 600 dpi resolution, generates fine dots and rich greyscales that provide smooth gradations.

### Enhanced Scan Performance

A function of Auto Colour Mode, the automatic suppression of unnecessary background colour is essential to achieving crisp, clear, natural-looking images. The AR-M560N/M460N provides enhanced background suppression without losing colour balance, resulting in scanned images that closely match the original.

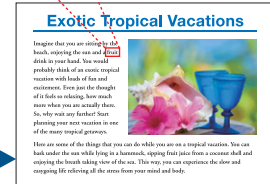
#### Auto Colour Mode



Original

Auto recognition

Text comes out crisp and clear, and unnecessary background colour is automatically removed



Scanned image

## EASE OF USE

### User-Friendly Control Panel

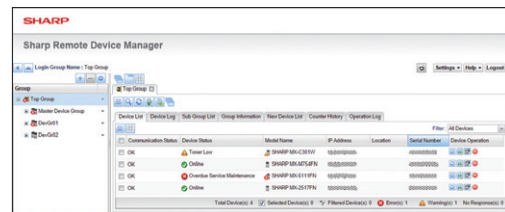
The AR-M560N/M460N is equipped with a 7.0-inch WVGA touchscreen colour LCD that provides easy navigation of MFP functions and settings.



### Sharp Remote Device Manager\*

This utility software gives administrators centralised control of their networked MFPs through a Web browser.

\*Contact a Sharp customer representative for availability and other details.



### Remote Operation\*

Working from an office-networked PC, users and/or administrators can remotely view the MFP's control panel and operate its features and functions.

\*Requires VNC application.

### Easy-Grip Handles

Easy-grip handles allow the paper drawers to be grasped from the top as well as the bottom for easy opening and closing.

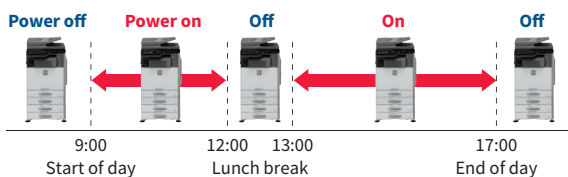


## OTHER KEY FEATURES

For further information on these features, please refer to Sharp's solutions brochure.

### Outstanding Energy Efficiency

- A warm-up time of **12 seconds** contributes to reduced overall energy consumption.
- Power ON/OFF Schedule** function automatically turns the MFP on or off per administrator-set schedules.



- Eco Scan** function saves energy by keeping the fusing system shut down during Scan to USB jobs, which don't require its use.

- Pressing the **power save key** after a job is finished immediately puts the MFP into auto power shut-off mode for further cutbacks on running costs.

Power save key



### Network Security and Access Control

- SSL** (secure sockets layer) and **IPsec** data encryption technologies ensure secure network communications.
- User Authentication** covering up to 1,000 users prevents unauthorised MFP use by requiring access passwords.
- Supports the **IEEE 802.1X** standard for port-based network access control.



User authentication

## SPECIFICATIONS (tentative)

### General

Type	Desktop
Engine speed	A4 (8 1/2" x 11")*1: Max. 56/46 ppm*2 A3 (11" x 17"): Max. 26/22 ppm
Control panel display	7.0-inch colour LCD touchscreen
Paper size	Max. A3 wide (12" x 18")*3, min. A5 (5 1/2" x 8 1/2")*4
Paper capacity (80 g/m <sup>2</sup> )	Standard: 600 sheets (500-sheet tray and 100-sheet multi-bypass tray) Maximum: 6,600 sheets (600 sheets & optional 500 + 2,000-sheet tray and 3,500-sheet tray) Tray: 60 g/m <sup>2</sup> to 220 g/m <sup>2</sup> (16 lbs bond to 80 lbs cover) Multi-bypass tray: 55 g/m <sup>2</sup> to 300 g/m <sup>2</sup> (13 lbs bond to 110 lbs cover)
Paper weight*5	
Warm-up time*6	12 sec.
Memory	2GB (copy/print shared)
Power requirements	Rated local AC voltage ±10%, 50/60 Hz
Power consumption	Max. 1.84 kW (220V to 240V), max. 1.44 kW (100V to 127V)
Dimensions (W x D x H)	608 x 690 x 837 mm (23 15/16" x 27 11/64" x 32 61/64")
Weight (approx.)	66 kg (145.5 lbs)

### Copier

Original paper size	Max. A3 (11" x 17")
First copy time*7	3.7/3.9 sec.
Continuous copy	Max. 999 copies
Resolution	Scan: 600 x 600 dpi, 600 x 400 dpi, 600 x 300 dpi*8 Print: 600 x 600 dpi, 9,600 (equivalent) x 600 dpi
Gradation	Scan: 256 levels Print: 256 levels (equivalent)
Zoom range	25% to 400% (25% to 200% using RSPF) in 1% increments
Preset copy ratios	Metric: 10 ratios (5R/5E), inch: 8 ratios (4R/4E)

### Colour Scanner

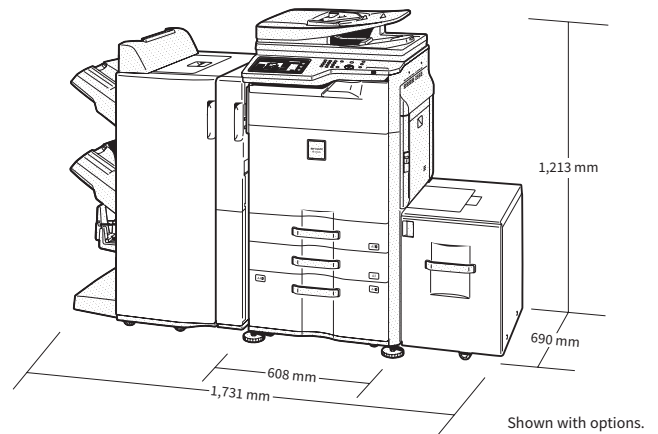
Scan method	Push scan (via control panel)
Resolution	100, 200, 300, 400, 600 dpi
File formats	TIFF, PDF, PDF/A, JPEG*9, XPS
Scan destination	Scan to USB drive

### Network Printer

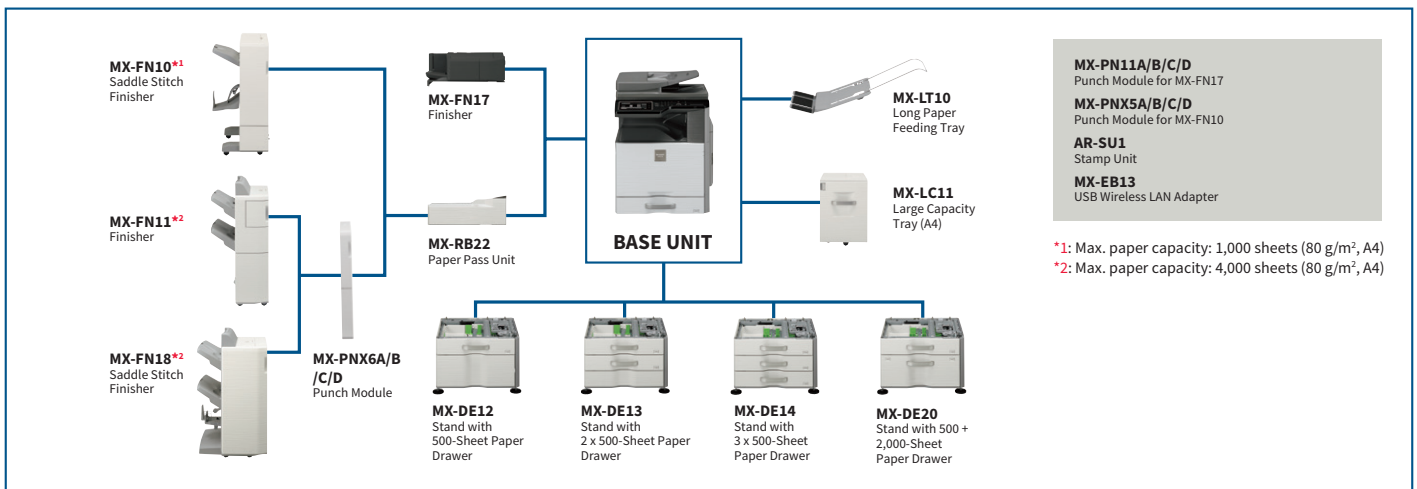
Resolution	600 x 600 dpi, 9,600 (equivalent) x 600 dpi
Interface	USB 2.0, 10Base-T/100Base-TX/1000Base-T
Supported OS	Windows Server® 2008, Windows Server® 2008 R2, Windows Server® 2012, Windows Server® 2012 R2, Windows Server® 2016, Windows Vista®, Windows® 7, Windows® 8.1, Windows® 10
Network protocols	TCP/IP (IPv4), IPX/SPX (NetWare)
Printing protocols	LPR, Raw TCP (port 9100), POP3 (e-mail printing), HTTP, FTP for downloading print files, IPP
PDL	PCL 6 emulation
Available fonts	80 fonts for PCL

- \*1: Long-edge feeding.
- \*2: 51 ppm for AR-M560N when equipped with MX-FN10.
- \*3: A3 wide (12" x 18") paper must be fed through multi-bypass tray.
- \*4: Only short-edge feeding can be used with A5 (5 1/2" x 8 1/2") paper.
- \*5: Depending on usage conditions and type of paper, printing may not be executed correctly.
- \*6: At rated voltage, 23°C (73.4°F). May vary depending on operating conditions and environment.
- \*7: Long-edge feeding of A4 (8 1/2" x 11") sheets from paper tray, using document glass, MFP in fully ready condition. May vary depending on operating conditions and environment.
- \*8: Not available when using RSPF.
- \*9: Colour/greyscale only.

• Design and specifications are subject to change without prior notice.  
• Windows, Windows Server, and Windows Vista are registered trademarks of Microsoft Corporation in the US and/or other countries. PCL is a registered trademark of Hewlett-Packard Company. All other brand names and product names may be trademarks or registered trademarks of their respective owners.



## SYSTEM CONFIGURATION



- \*1: Max. paper capacity: 1,000 sheets (80 g/m<sup>2</sup>, A4)
- \*2: Max. paper capacity: 4,000 sheets (80 g/m<sup>2</sup>, A4)

Certain options may not be available in some areas.

Distributed by:

# SHARP